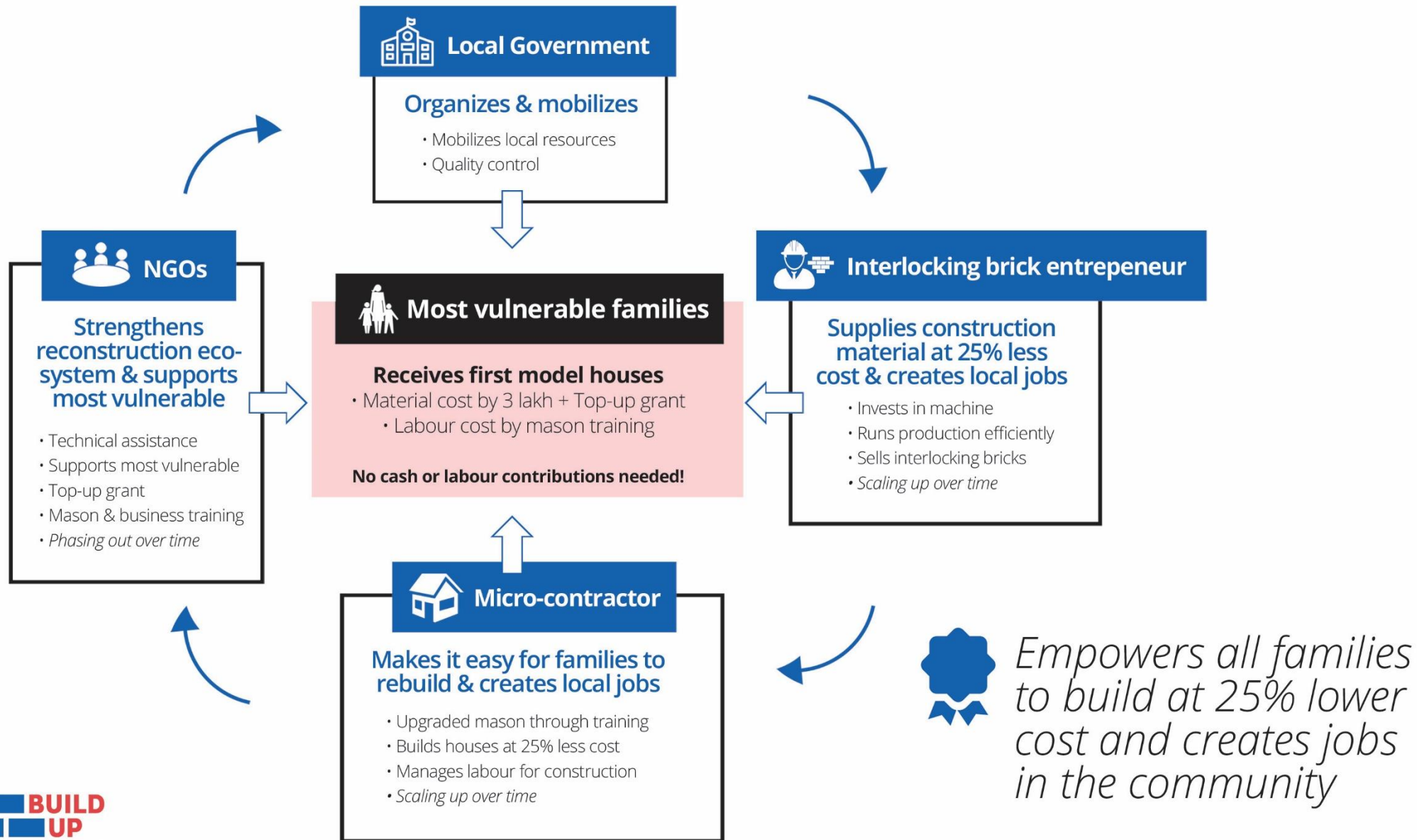


Developing the reconstruction eco-system

Allowing the most vulnerable to rebuild at minimal cost





Benefits for the most vulnerable



Most vulnerable – *not capable*

- Elderly (70+)
- Single mothers
- Disabled
- Children (16 or younger)

Benefits

- Their houses are rebuilt first
- 25% lower cost
- Labour supported by mason training
- Top-up grant



Most vulnerable – *capable*

- Financially/socially weak or displaced
- Capable of labour & working

Benefits

- 25% lower cost
- Additional savings by building their own house
- Jobs in production & construction